

# **A Prospective Approach to Developing Risk, Need, and Responsivity Assessment**

Brian Lovins  
Associate Director/UCCI  
University of Cincinnati



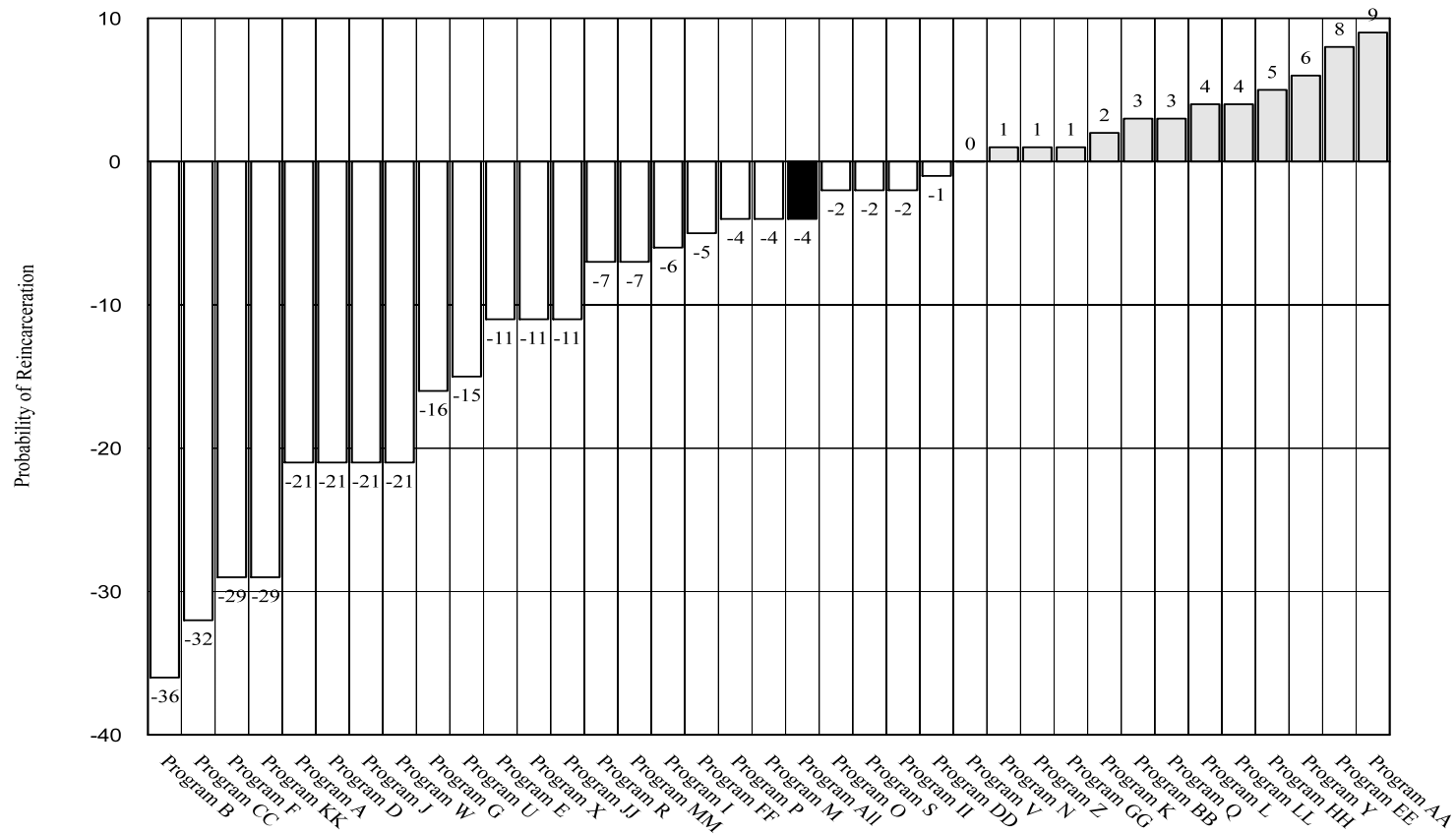
# The Corrections System

*Criminal Justice/Juvenile Justice Systems are often a patchwork of information that is not shared across imaginary boundaries*

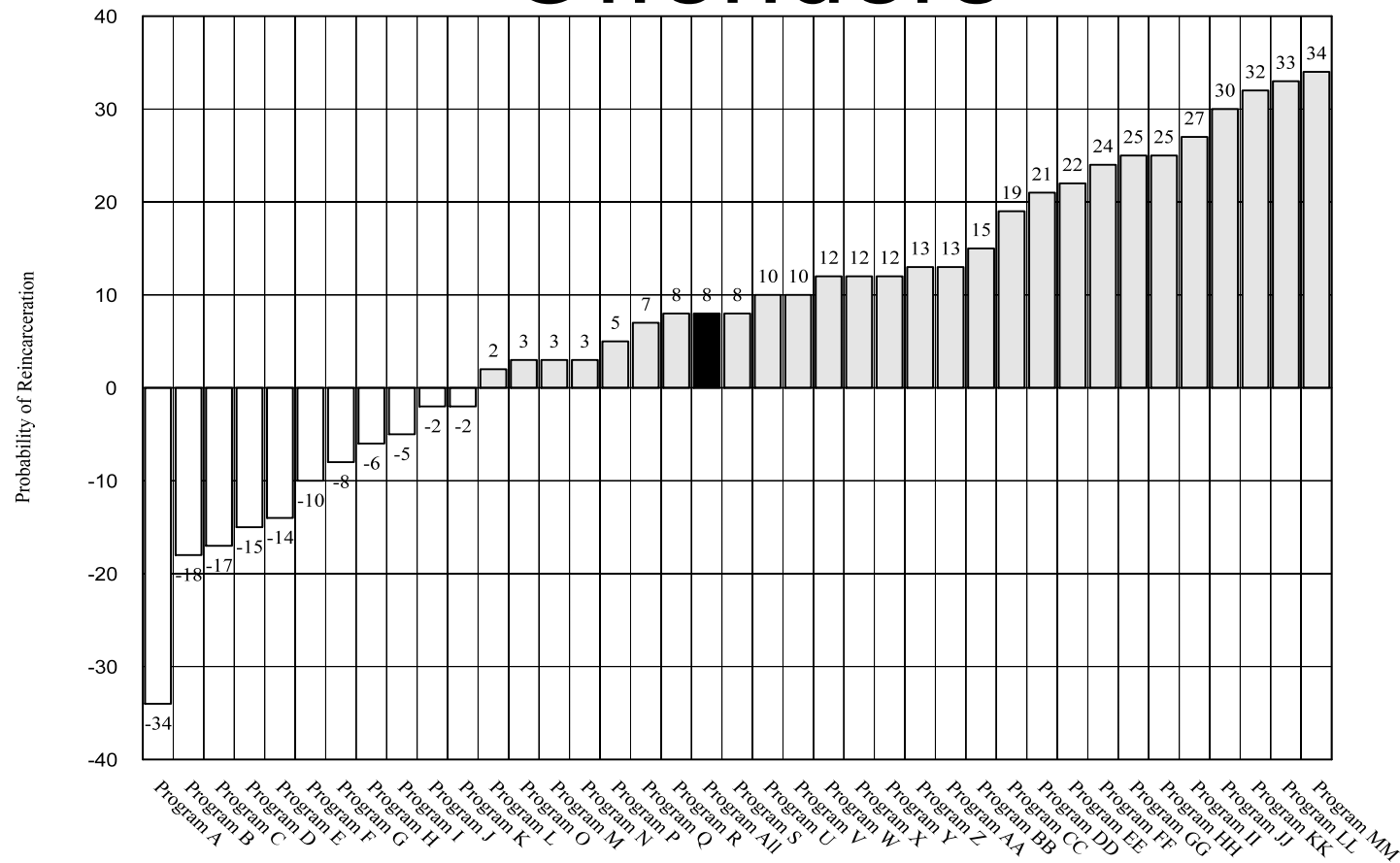


# IMPORTANCE OF KNOWING RISK

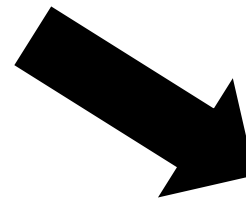
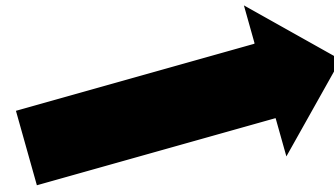
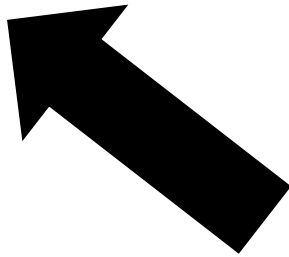
# Treatment Effects for Low Risk Offenders



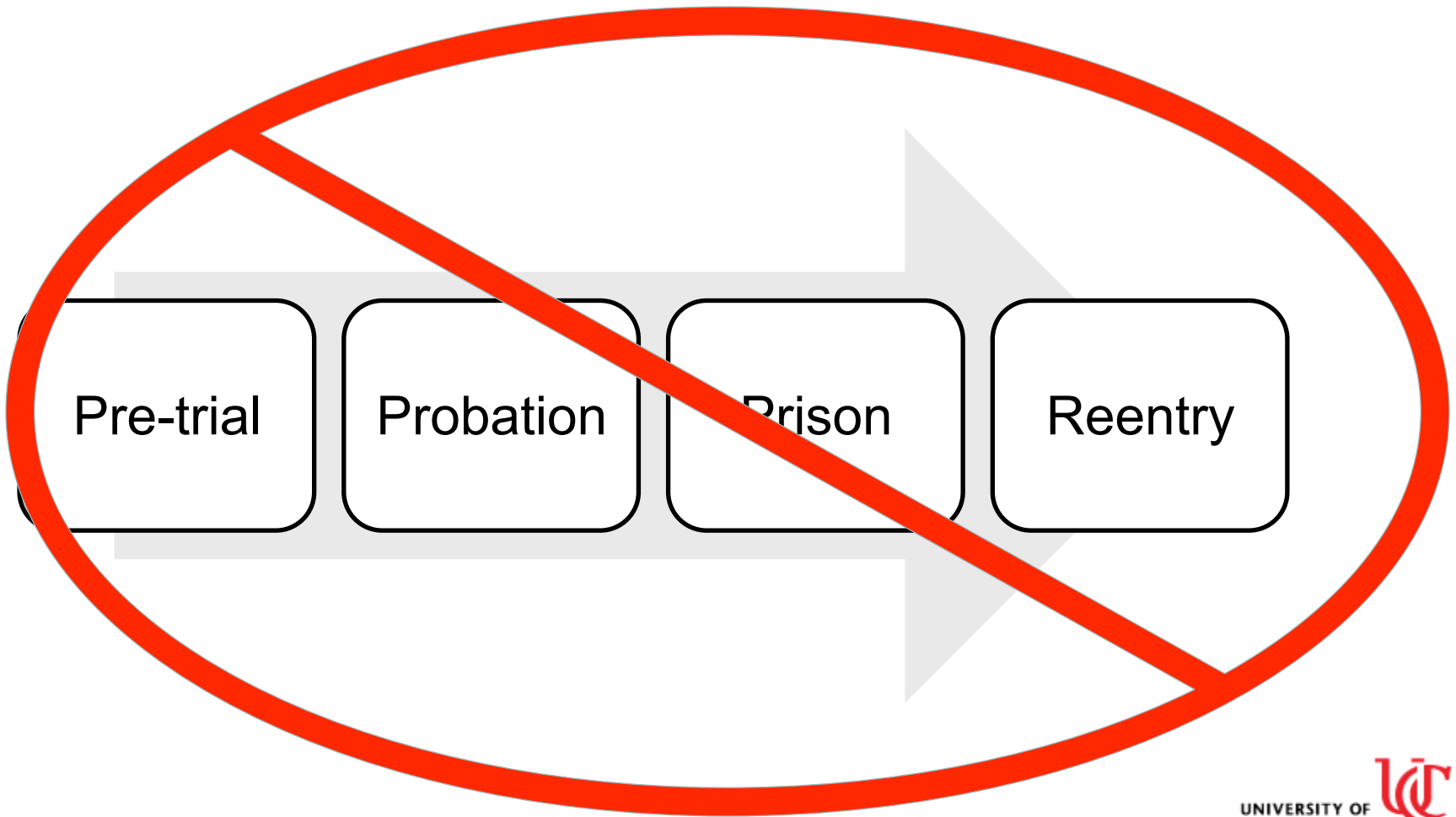
# Treatment Effects for High Risk Offenders



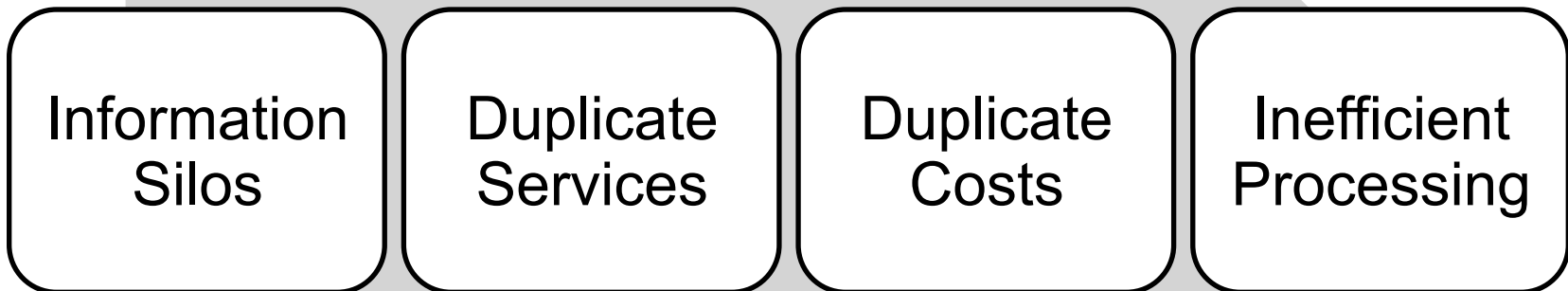
# Common Occurrence



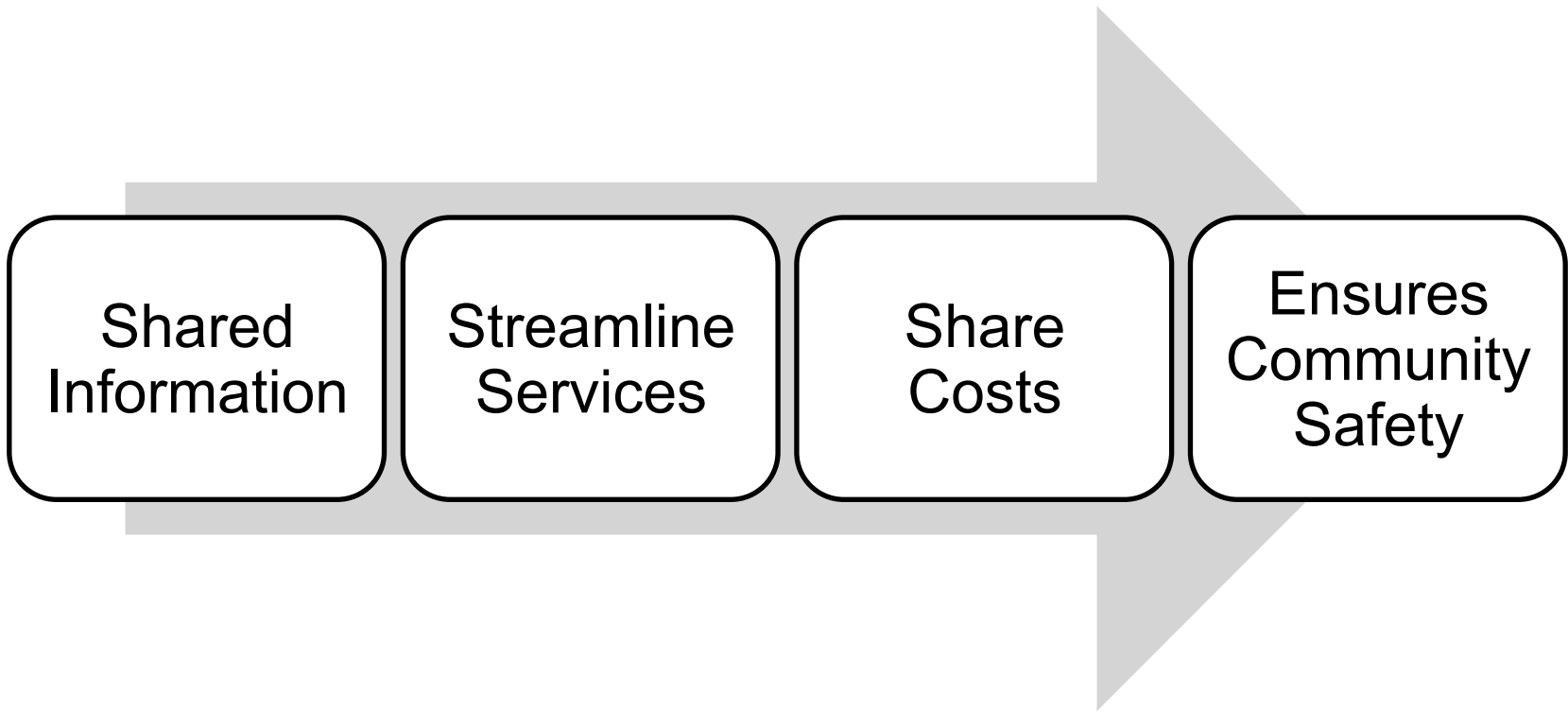
Multiple Assessments = No Common Language



# No Common Language = No Common Purpose



# One Language = One Purpose



# Other Benefits to the ORAS/ OYAS

1. Expand as needed depending on the setting
2. Includes major risk & criminogenic need domains, as well as major responsivity factors
3. Includes indicators of change in a residential or institutional setting
4. Designed to measure change over time
5. Provides a common definition of risk across settings
6. Public domain
7. Fully automated
8. Dramatically improves our research and evaluation capabilities

# Domains Examined

1. Pro-criminal views/criminal thinking
2. Friends and criminal acquaintances
3. Education
4. Family and social relationships
5. Residence stability and safety
6. Alcohol abuse/use
7. Drug abuse/use
8. Mental and physical health
9. Employment (status and values)
10. Criminal history



# Domains Examined

11. Financial stress
12. Involvement in pro-social activities
13. Physical and sexual abuse
14. Problem recognition
15. Treatment motivation, needs, expectations
16. Anxiety/negative emotionality
17. Empathy/perspective taking
18. Coping skills/values
19. Anger/frustration

# Assessing Risk to Reoffend

- 1<sup>st</sup> generation assessment
  - Clinical judgment
- 2<sup>nd</sup> generation assessment
  - Static factors
- 3<sup>rd</sup> generation assessment
  - Combination of static and dynamic factors
- 4<sup>th</sup> generation assessment
  - Integrates results of the assessment with a case plan

# Who Is More Likely to Reoffend?

- 1<sup>st</sup> time DUI
  - Drinking at a bar with friends
  - Crossed the double yellow line
  - .12 BA
  - Employed
  - Has a driver's license
  - States "The cop was just doing their job"
  - "It is not ok to drink and drive"
  - Family that supports sober lifestyle
- 1<sup>st</sup> time DUI
  - Drinking at a bar with friends
  - Crossed the double yellow line
  - .12 BA
  - Unemployed
  - Driving w/o a license
  - States "The cop was out to get me"
  - Everyone gets one DUI
  - Family who engages in alcohol use on a regular basis



# **ADDRESSING THE CURRENT ISSUES WITH RISK ASSESSMENT**

# Current Study

## Retrospective

- Advantages
  - Quicker
  - Cheaper
- Disadvantages
  - Limited to data in files
  - Difficult to measure dynamic factors

## Prospective

- Advantages
  - More comprehensive
  - Wider range of factors
  - Not dependent on existing files
  - Can re-assess during follow-up period
- Disadvantages
  - Takes longer
  - More expensive



# Why is this project unique?

- Regardless of approach, most previous attempts have focused on one decision point (i.e. probation or intake to facility)
- Current study examined four decision points uniquely

# Review of the Current Literature

- Theoretically driven data collection
- Major areas of focus
  - Delinquency History
  - Family and social support networks
  - Peers
  - Mental Health
  - Personality
  - Education
  - Exposure to violence
  - Housing
  - Leisure/Recreation
  - Pro-social skill set
  - Substance abuse
  - Sexual, physical abuse, and neglect
  - Employment
  - Social factors



# Data Collection

- Face-to-face interviews were conducted
- Follow-up interviews were conducted with a sub-sample of the population
- Questions across multiple domains
- Self-report questionnaire was collected
- File review

# What Mattered?

- Criminal History
  - Adults
  - Juveniles
- Family and Friends
  - Friends more predictive than family
- Substance Abuse
  - Most recent use versus past
- Employment
  - Employed but also continued employment
- Values and Beliefs
  - Criminality
  - Gangs
  - Violence

# What Did Not Matter?

- Smoking cigarettes
- Playing video games
- Watching television
- Blended/1 parent families
- Medical issues
- Friends use of alcohol
- History of running away from home
- Consensual sexual activity
- Having your own room at home
- House/apartment
- Birth order
- History of suicide attempts
- Socially isolated
- Number of adults supportive of youth
- History of alcohol use
- Number of children



# OYAS Tools

- Diversion
- Detention
- Dispositional Tool
- Residential Tool
- Reentry Tool



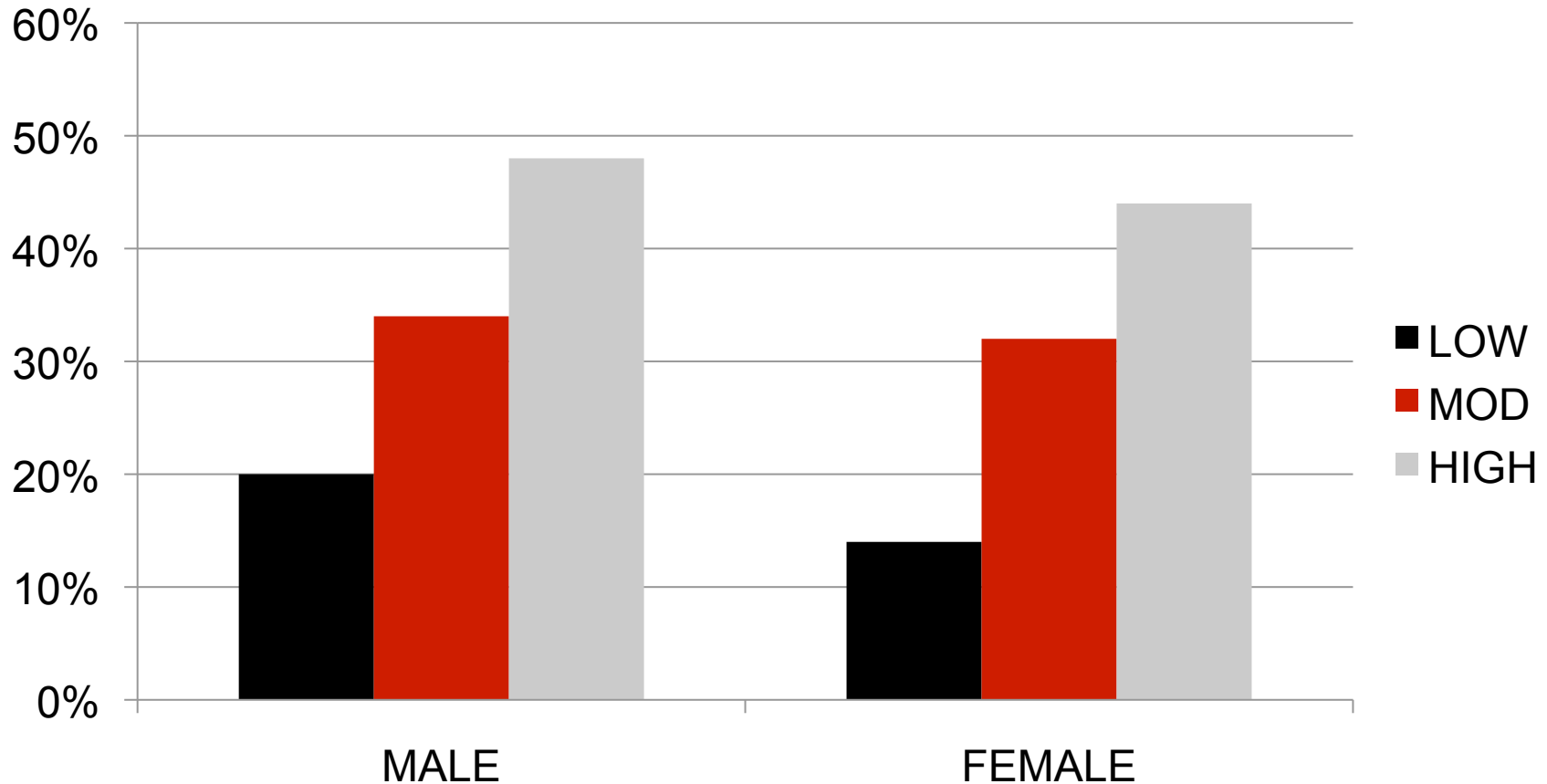
# ORAS Tools

- Pre-trial
- Community Supervision
- Prison Intake
- Prison Reentry/Supplemental Reentry



# OYAS: DIV Diversion Tool

# Re-arrest within 12 Months

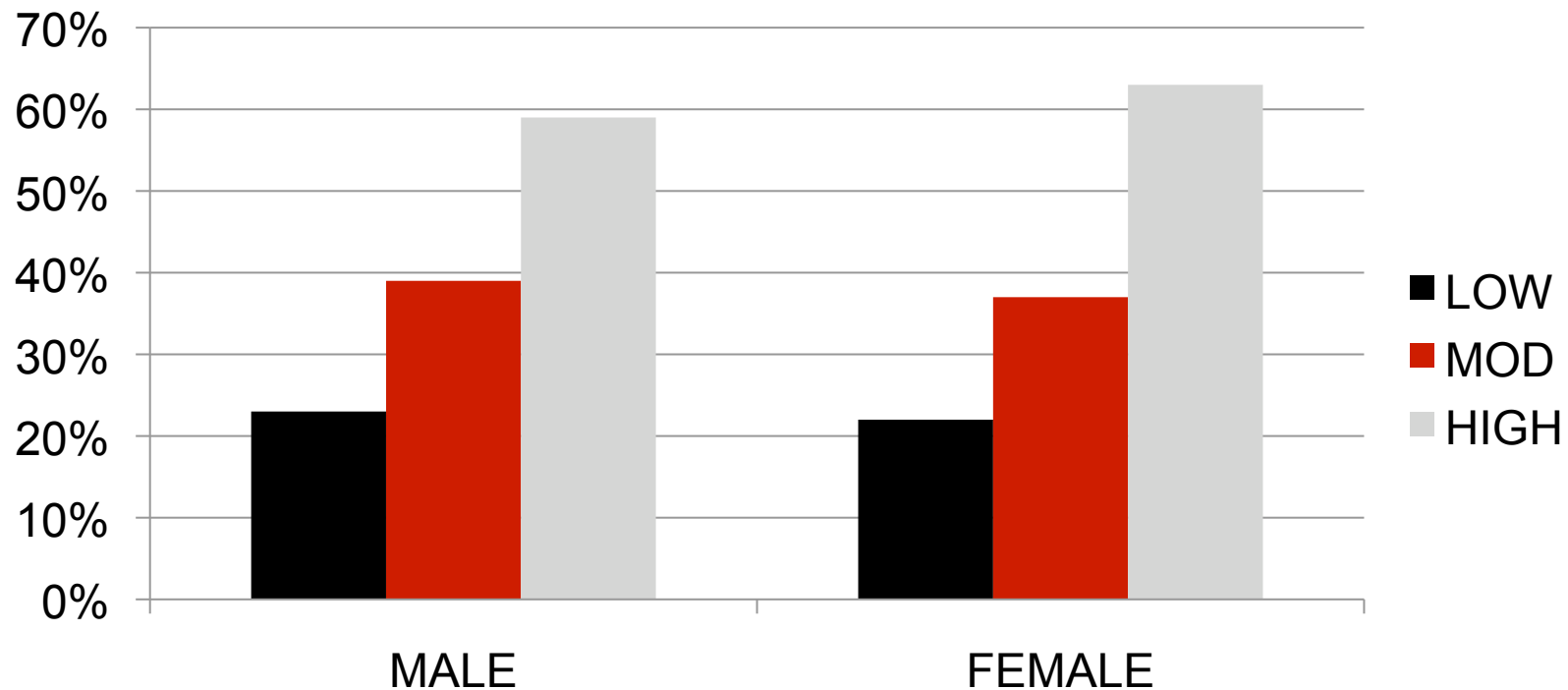


Diversion Tool correlation with recidivism:  
Male  $r = .223^*$     Female  $r = .192^*$



# OYAS: DET Detention Tool

# Re-arrest within 12 Months



Detention Tool correlation with recidivism:

Males  $r = .324^*$

Females  $r = .230^*$

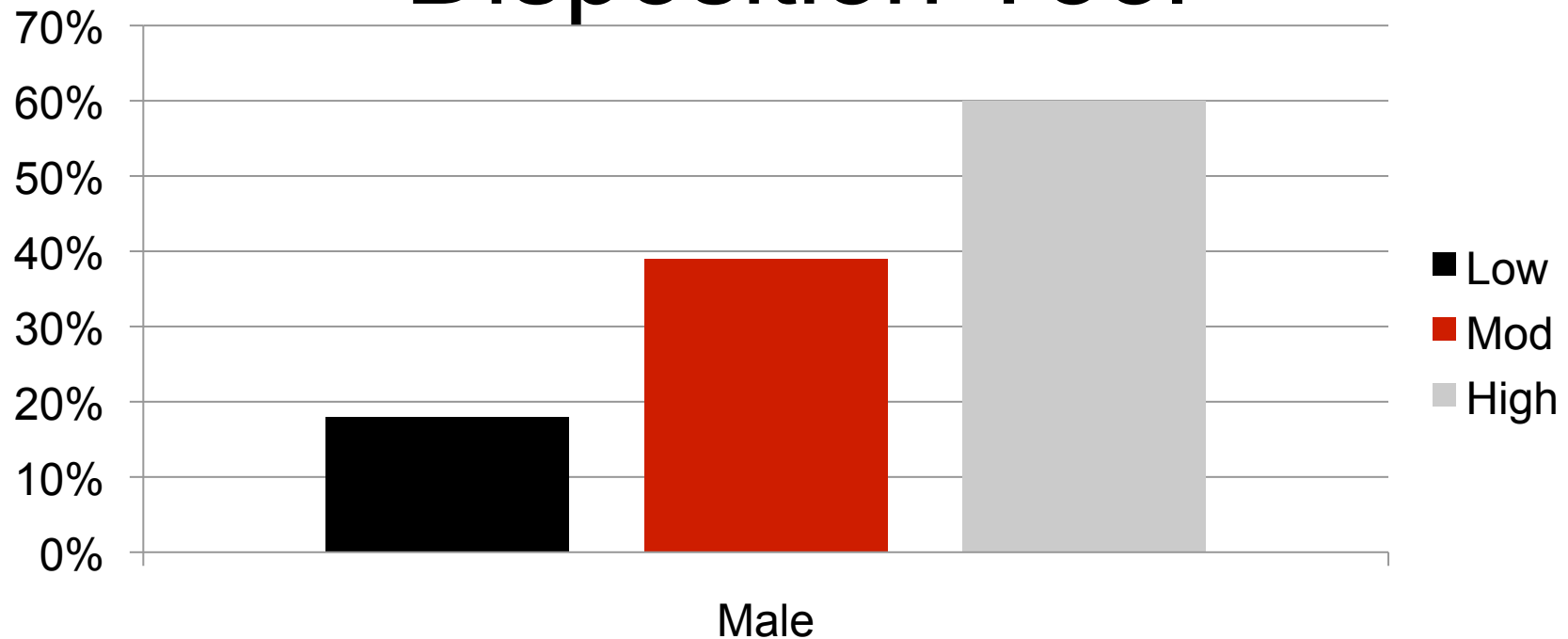


# OYAS-DISP Disposition Tool

# Final Domains for the Disposition Tool

1. Juvenile Justice History (2 items)
2. Family and Living Arrangements (6 items)
3. Peers and Social Support (6 items)
4. Education/Employment (4 items)
5. Pro-social Skill Set (3 items)
6. Substance Abuse, Mental Health, and Personality (6 items)
7. Values, Beliefs, and Attitudes (5 items)

# Re-arrest Rates for the Disposition Tool



Correlation with recidivism:  $r = .347^*$

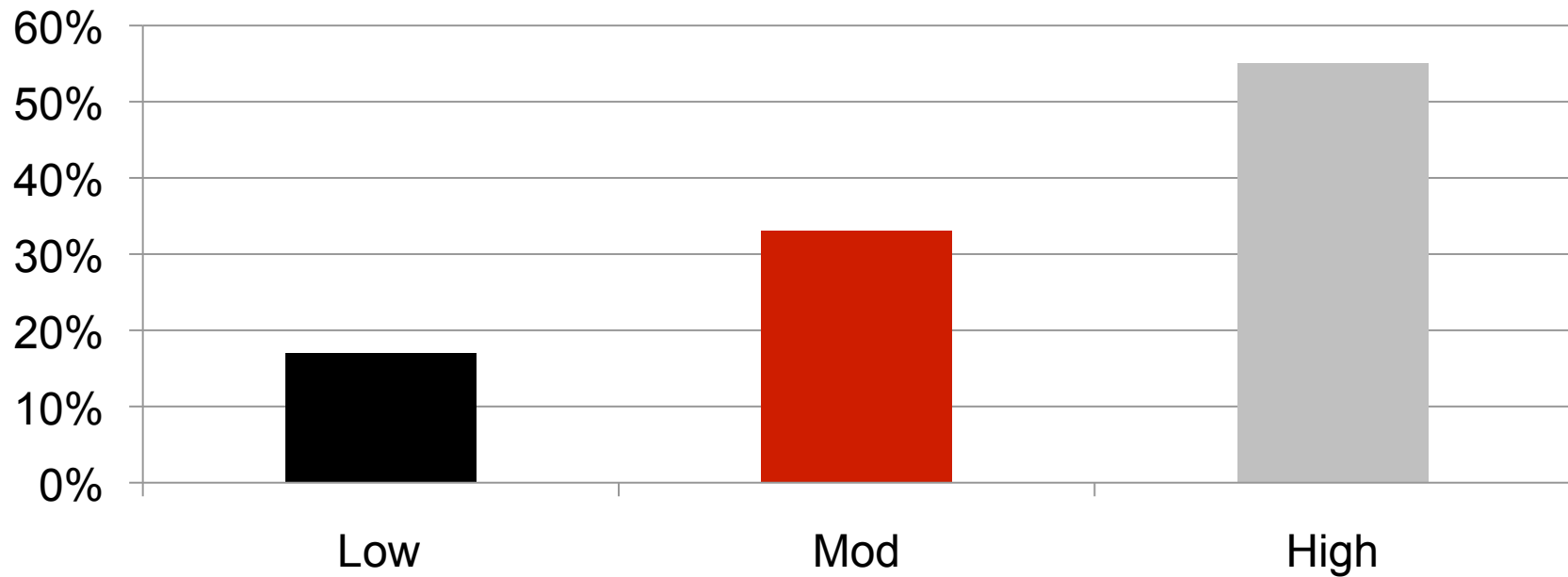


# OYAS: RES Residential Tool

# Final Domains for the Residential Tool

1. Juvenile Justice History (3 items)
2. Family and Living Arrangements (3 items)
3. Peers and Social Support (7 items)
4. Education/Employment (3 items)
5. Pro-social Skill Set (4 items)
6. Substance Abuse, Mental Health, and Personality (8 items)
7. Values, Beliefs, and Attitudes (5 items)

# Re-arrest Rates for Residential Tool



Residential tool correlation with recidivism:  $r = .325^*$

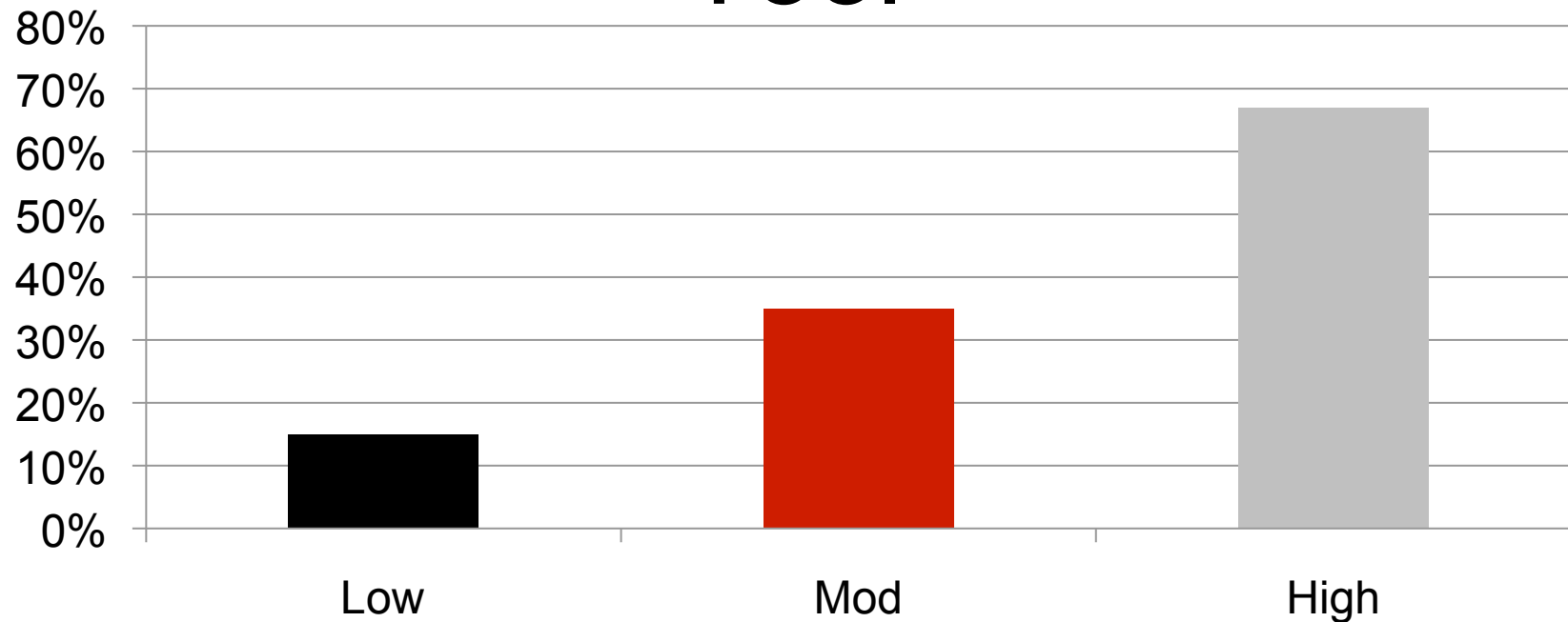


# OYAS: RET Reentry Tool


# Final Domains for the Reentry Tool

1. Juvenile Justice History (7 items)
2. Family and Living Arrangements (4 items)
3. Peers and Social Support (9 items)
4. Education/Employment (4 items)
5. Pro-social Skill Set (4 items)
6. Substance Abuse, Mental Health, and Personality (7 items)
7. Values, Beliefs, and Attitudes (6 items)

# Re-arrest Rates for Reentry Tool



Reentry tool correlation with recidivism  $r = .409^*$



# ORAS-CST

## Community Supervision Risk Assessment Tool



# Final Domains for the Community Supervision Assessment

1. Criminal History (6 items)
2. Education, Employment and Finances (6 items)
3. Family and Social Support (5 items)
4. Neighborhood Problems (2 items)
5. Substance Use (5 items)
6. Peer Associations (4 items)
7. Criminal Attitudes and Behavioral Problems (7 items)

# The Community Supervision Screen

- ORAS-CSST
  - Abbreviated version of the ORAS-CSST
  - 4 items taken from the ORAS-CSST
  - Scores range from 0 - 7
  - Overall Correlation with New Arrest:  $r = .381$



# ORAS-PIT

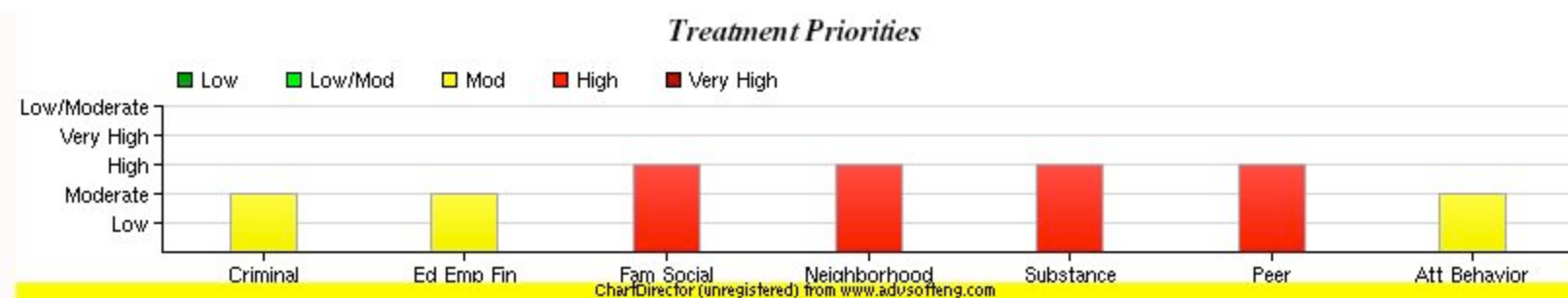
## Prison Intake Tool



# Final Domains for the Prison Intake Assessment

1. Criminal History (7 items)
2. Education and Employment (6 items)
3. Family and Social Support (5 items)
4. Substance Use and Mental Health (5 items)
5. Criminal Lifestyle (7 items)

# ORAS-CST Intake Assessment



# ORAS-CST Re-assessment Education and Employment

1. **Highest Education**

High School Graduate or Higher

2. **Ever Suspended or Expelled From School**

No

3. **Employed at the Time of Arrest**

No\*

4. **Currently Employed**

Yes, Full-time, Disabled, or Retired

5. **Better Use of Time**

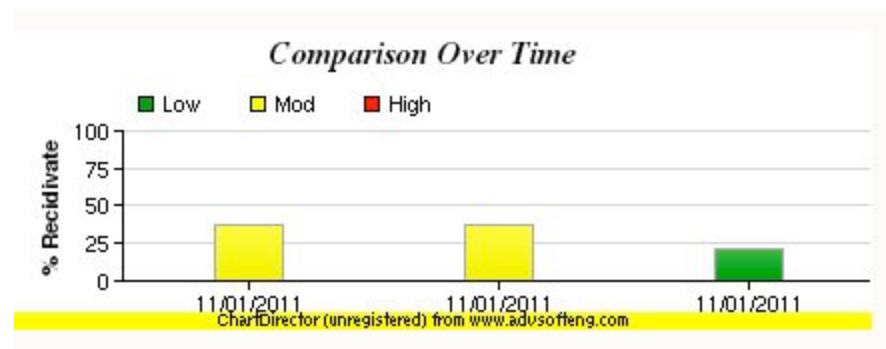
No, Most Time Structured

6. **Current Financial Situation**

Stable/Minimal Problems

Total: 1

Need Level: Low



Cincinnati

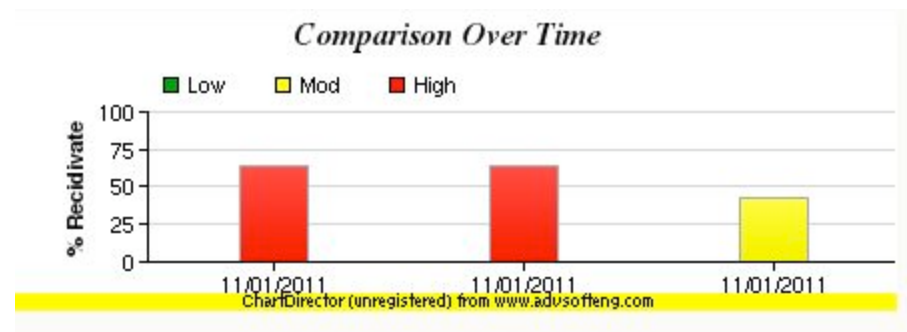
# ORAS-CST Re-assessment Peer Association

## Peer Associations

1. **Criminal Friends**  
Some\*
2. **Contact with Criminal Peers**  
At Risk of Contacting Criminal Peers\*
3. **Gang Membership**  
No, Never
4. **Criminal Activities**  
Mixture\*

Total: 3

Need Level: Moderate



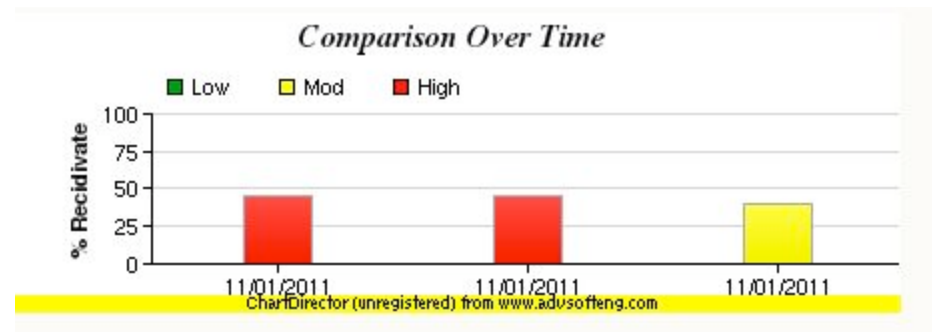
# ORAS-CST Re-assessment Substance Abuse

## Substance Use

1. **Age First Began Regularly Using Alcohol**  
17 or Older
2. **Longest Period of Abstinence from Alcohol**  
Less than six Months\*
3. **Ever Used Illegal Drugs**  
Yes\*
4. **Drug Use Caused Problems**  
Past\*
5. **Drug Use Caused Problems with Employment**  
No

Total: 3

Need Level: Moderate






# ORAS-RT Reentry Tool



# Final Domains for the Prison Reentry Assessment

1. Criminal History (8 items)
2. Education, Employment, and Financial Situations (4 items)
3. Criminal Attitudes and Behavioral Patterns (7 items)



# ORAS-SRT

## Supplemental Reentry Tool



# Final Domains for the Prison Intake Assessment

1. Criminal History (7 items)
2. Education, Employment, and Social Support (6 items)
3. Substance Use and Mental Health (5 items)
4. Criminal Attitudes and Behavioral Patterns (7 items)

# Case Planning

- The following instruments are designed to drive case planning:
  - The Community Supervision
  - The Prison Intake
  - Prison Reentry
- Domains & responsivity factors automatically populate the case plan
  - Domains are prioritized by level/type

# The Best Endorsement

*Parole officers are not social workers; ORAS assumes  
the PD is invested in & cares about the offender on our  
caseload*  
Optional:

# Conclusions

- Common language across sites and throughout the system
- Provides targets for change
- Assists correctional workers in targeting criminogenic needs
- Leverages resources
- Increases efficiency